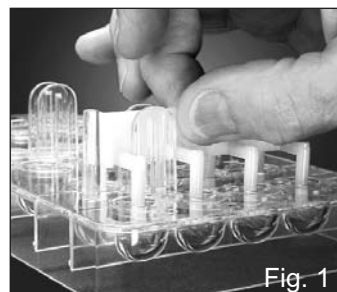


## QUICK GUIDE TO USING MULTI-TEST PC

For complete use instructions, see enclosed package insert, and insert from Dipwell Tray package

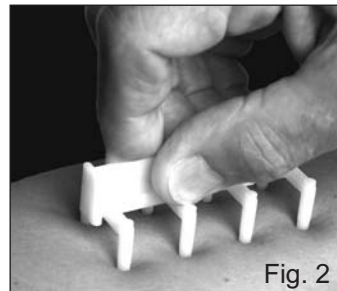
### Step 1

Grasp Multi-Test PC handle between test heads 2 and 3, and then lower device between guide panels into wells containing extracts and controls. See Fig. 1. **Be sure all wells contain adequate amounts of extracts and controls.**



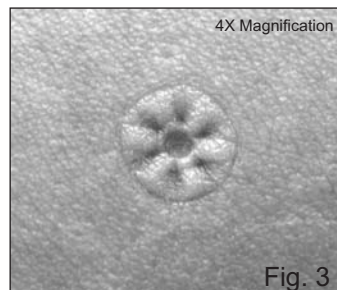
### Step 2

**Vertically** remove loaded device from wells while holding Multi-Test PC handle between test heads 2 and 3. Check each test head for proper load.



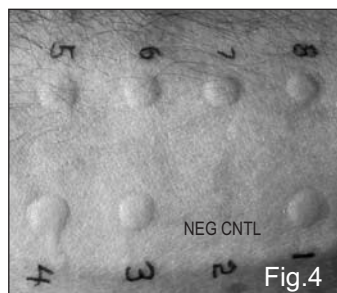
### Step 3

Allow touch posts to contact skin for one second, and then press loaded Multi-Test PC **FIRMLY** into skin at test sites. See Fig. 2. **While maintaining pressure on Multi-Test PC and with points in the skin, gently shift pressure from left to right and from end to end to gain uniform point penetration at all test sites.** This procedure should be completed within approximately two seconds. With proper pressure, all test sites will show the pattern illustrated in Fig. 3.



### Step 4

Read results from glycerinated controls and extracts between 15 and 20 minutes following administration of tests. Optimal reading time is 20 minutes. With proper technique, well defined histamine wheals, 6mm to 7mm in diameter, will result from histamine at a concentration of **1mg/ml**, providing nothing is suppressing the patient's ability to react. See typical histamine reactions, Fig. 4. **DO NOT USE HISTAMINE AT 6MG/ML CONCENTRATION.** Underdiagnosis of allergic rhinitis may occur with this high concentration.



**LINCOLN DIAGNOSTICS, INC.**

2-12-2012